

## BIRD OBSERVATIONS SEYMOUR TOWNSHIP, S.E. ONTARIO

Number of days on which a species is seen each month

### Northern cardinal

Data compiled 19 February 2021

Chart 1998-2021, including 22 complete calendar years

**1998 notes :** based on short visit on 05 June, and then on observations 24 August onwards

Species

Northern cardinal

Year	Jan	Feb	Mar	Apr	May	Jun	Jul	Aug	Sep	Oct	Nov	Dec	Total	Notes
1998													0	
1999						1							1	
2000						3		1	2				6	
2001				2									2	
2002			1	1	3	1	1	1					8	
2003	1	3	2	3	4	5	2	1		1			22	28-Oct
2004		1		1	8	4	3	4					21	
2005			4	3		1		1					9	
2006				8	3	1	6	4					22	
2007			3	4	3	7	3	1				1	22	
2008	2	2	1	2	1		2	3					13	
2009		1	7	8	6	2	2					3	29	
2010			1	5	4	1	4	4	2	1	3		25	Immature male, 10 Oct
2011			8	9	6	9	4	1			1		38	
2012			5	8	3			1		1	1	2	21	
2013	1	2	10	13	5	8	4	2	2				47	
2014			9	2	2	5	6	4	1	1	1	2	33	01 Oct, 14 Nov
2015	1		2	14	9	2	12	2				5	50	
2016	10	8	4	1				4	2	4	9	3	45	20-27 Oct - 4 sightings, immatures
2017					7	1	4	2			4	10	28	
2018	13	10	7		4	5	2	5			1		47	
2019	1		4			8	9	6				3	32	
2020			8	9	7	8	4	6	1		5	11	59	
2021	11	7											18	Not counted in chart
	Jan	Feb	Mar	Apr	May	Jun	Jul	Aug	Sep	Oct	Nov	Dec	Total	598 sighting-days, 1998-2020
	29	27	76	93	75	72	68	53	10	8	31	38	598	

Likely bird strikes at home - none

Updated to 19 February 2021

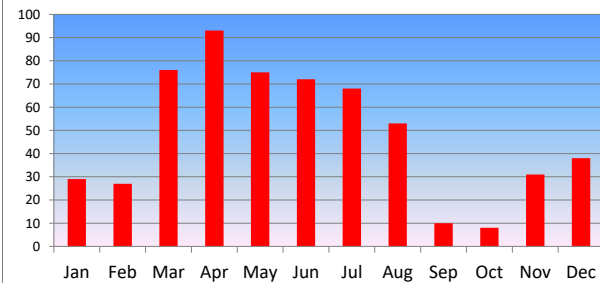
**Note:** the chart displays the number of days in a given month in which the species was seen. This says nothing of total bird numbers: though no more than six have been noted here at any one time. This is a **minimum**, as the observer was not present continuously (some multi-week absences in some years), did not spend long intervals on the major waterways, and was not observing from dawn to dusk.

Source:

[www.turnstone.ca/birdlist.htm](http://www.turnstone.ca/birdlist.htm)

compiled by / © G.C. Wilson, 2021

**Cardinal - activity chart**  
Seymour Twp., ON, 1998-2020 (22 years, n=598)



Bird identification, Cornell Lab of Ornithology:  
visit

[http://www.allaboutbirds.org/guide/Northern\\_Cardinal/](http://www.allaboutbirds.org/guide/Northern_Cardinal/)